

Ref	Species	Height (m)	Stem Dia. (mm)	Maturity Young, Middle Age, Mature	Condition Good, Fair, Poor, Veteran	Comments on form, condition, health and significant defects	BS5837 Tree Quality Assess. A,B,C,R (1,2,3)	Management Recommendations	Estimated Remaining Contribution Long, Medium, Short
Groups									
G1	Plantation mixed woodland	Up to 4	75-150	Young	Good	Dense mixed species plantation; tree guards still in position	C,2		Long
G2	Plantation mixed woodland	Up to 4	75-150	Young	Good	Dense mixed species plantation; tree guards still in position	C,2		Long
G3	Plantation mixed woodland	Up to 7	100-220	Middle Age	Good	Low dense screening adjacent road	C,2		Long
G4	Plantation mixed woodland	Up to 4	75-150	Young	Good	Dense mixed species plantation; tree guards still in position	C,2		Long
G5	Mixed deciduous shelterbelt planting	Up to 9	100-200	Middle Age	Fair	Screen planting; some trees have low vigour and/or poor form	C,2		Long
G6	Mixed broad-leaf	Up to 5	100-200	Young to Middle Age	Good	Scattered, self-set trees; no significant defects	C,2		Long
G7	Mixed broad-leaf	Up to 5	100-200	Young to Middle Age	Good	Scattered, self-set trees; no significant defects	C,2		Long

KEY
(This drawing must be reproduced in colour)

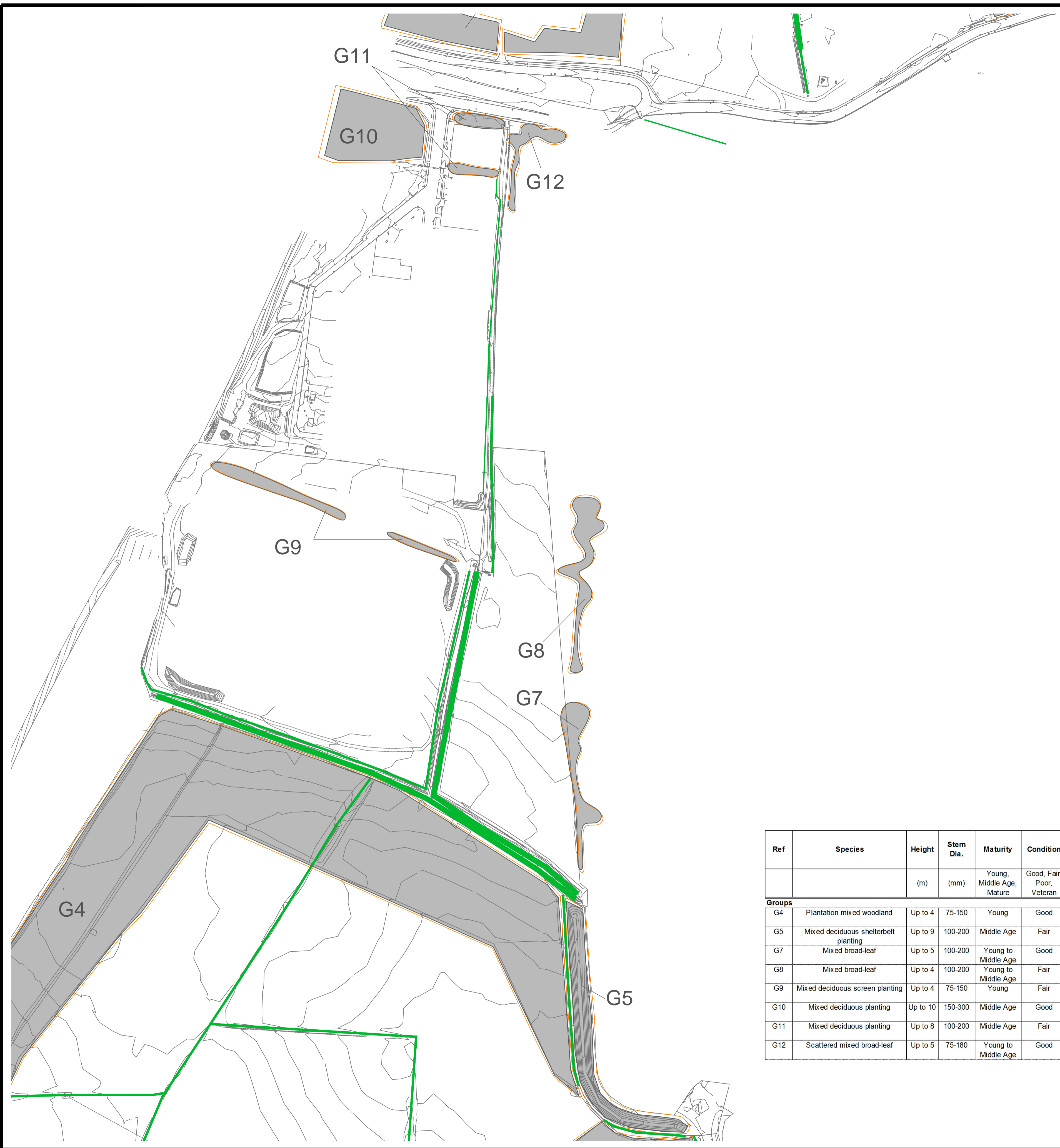
- T1 Individual trees
- G1 Groups of trees
- Hedgerow
- Root Protection Area (RPA)

Tree Categorisation
(Tree value categorisation based on BS 5837:2012 Trees in relation to design, demolition and construction - Recommendations)

- Category A (High quality)
- Category B (Moderate quality)
- Category C (Low quality)
- Category U (Unsuitable for retention)

Rev	Description	Drawn	Approved	Date
Genesis Centre Birchwood Science Park Warrington WA3 7BH Tel 01925 844004 Fax 01925 844002 e-mail tep@tep.uk.com				
Project				
NSN Link				
Title				
Tree Location Plan [EXISTING]				
Drwg No		D2336.001		
Scale	1:2000 @ A1	Date	14/11/13	
Drawn	RMG	Checked	TSJ	Approved
				JGS





KEY
[This drawing must be reproduced in colour]

- T1 Individual trees
- G1 Groups of trees
- Hedgerow
- Root Protection Area (RPA)

Tree Categorisation
[Tree value categorisation based on BS 5837:2012 Trees in relation to design, demolition and construction - Recommendations]

- Category A (High quality)
- Category B (Moderate quality)
- Category C (Low quality)
- Category U (Unsuitable for retention)

Ref	Species	Height (m)	Stem Dia. (mm)	Maturity	Condition	Comments on form, condition, health and significant defects	BS5837 Tree Quality Assess. A,B,C,R (1,2,3)	Management Recommendations	Estimated Remaining Contribution Long, Medium, Short
Groups									
G4	Plantation mixed woodland	Up to 4	75-150	Young	Good	Dense mixed species plantation; tree guards still in position	C,2		Long
G5	Mixed deciduous shelterbelt planting	Up to 9	100-200	Middle Age	Fair	Screen planting; some trees have low vigour and/or poor form	C,2		Long
G7	Mixed broad-leaf	Up to 5	100-200	Young to Middle Age	Good	Scattered, self-set trees; no significant defects	C,2		Long
G8	Mixed broad-leaf	Up to 4	100-200	Young to Middle Age	Fair	Scattered, self-set trees; some have poor form and low vigour	C,2		Long
G9	Mixed deciduous screen planting	Up to 4	75-150	Young	Fair	Screen planting; low vigour	C,2		Long
G10	Mixed deciduous planting	Up to 10	150-300	Middle Age	Good	Scattered plantation; no significant defects	C,2		Long
G11	Mixed deciduous planting	Up to 8	100-200	Middle Age	Fair	Small linear group adjacent road; low vigour	C,2		Long
G12	Scattered mixed broad-leaf	Up to 5	75-180	Young to Middle Age	Good	Scattered, self-set trees; no significant defects	C,2		Long

Rev	Description	Drawn	Approved	Date

TEP Genesis Centre
 Birchwood Science Park Warrington
 WA3 7BH
 Tel 01925 844004
 Fax 01925 844002
 e-mail tep@tep.uk.com

Project

NSN Link

Title

Tree Location Plan
 [EXISTING]

Dwg No
 D2336.002

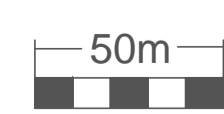
Scale
 1:2000 @ A1

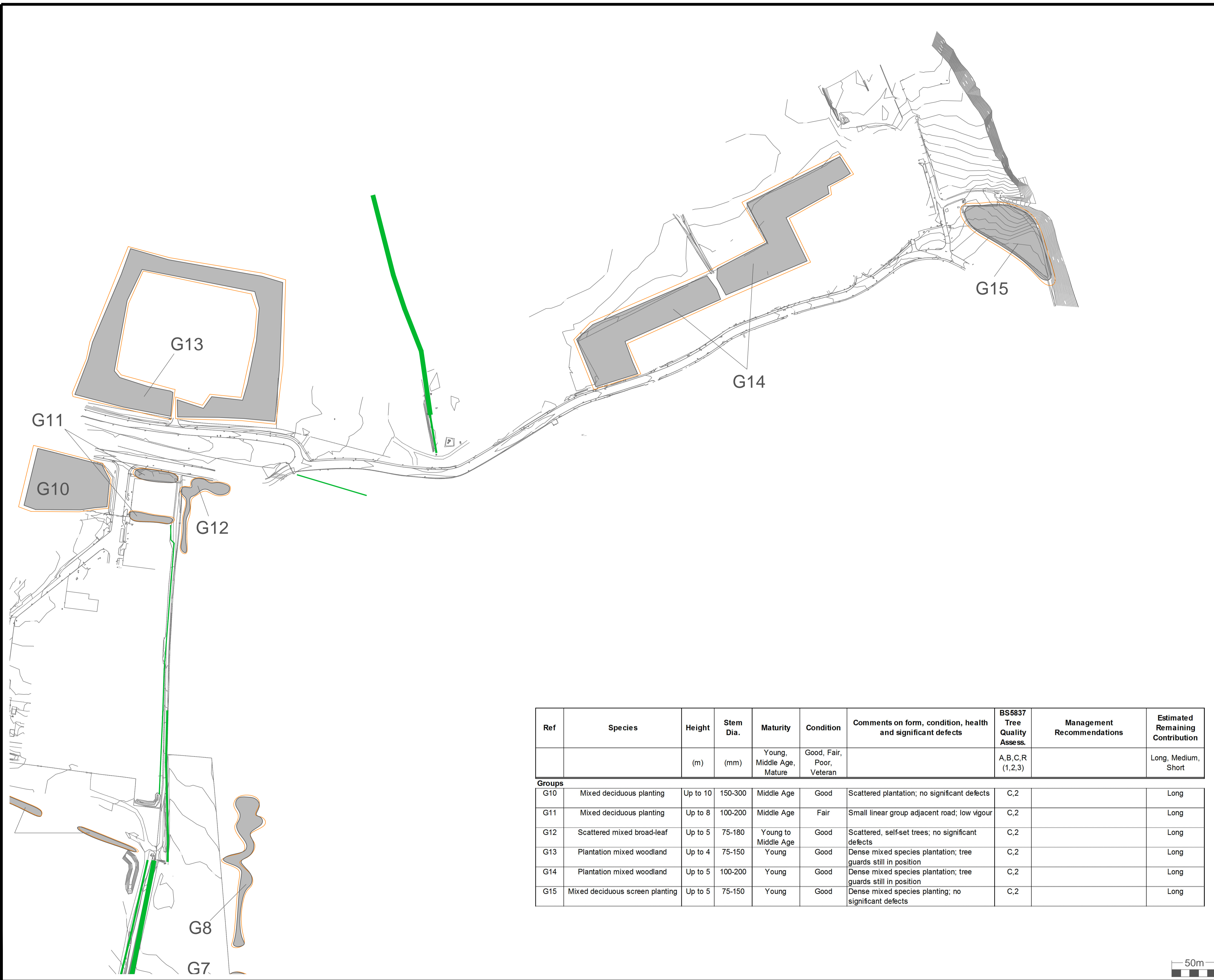
Date
 14/11/13

Drawn
 RMG

Checked
 TSJ

Approved
 JGS



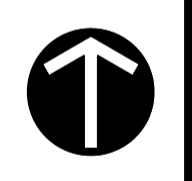


KEY
[This drawing must be reproduced in colour]

- T1 Individual trees
- G1 Groups of trees
- Hedgerow
- Root Protection Area (RPA)

Tree Categorisation
[Tree value categorisation based on BS 5837:2012 Trees in relation to design, demolition and construction - Recommendations]

- Category A (High quality)
- Category B (Moderate quality)
- Category C (Low quality)
- Category U (Unsuitable for retention)



Ref	Species	Height	Stem Dia.	Maturity	Condition	Comments on form, condition, health and significant defects	BS5837 Tree Quality Assess.	Management Recommendations	Estimated Remaining Contribution
		(m)	(mm)	Young, Middle Age, Mature	Good, Fair, Poor, Veteran		A,B,C,R (1,2,3)		Long, Medium, Short
Groups									
G10	Mixed deciduous planting	Up to 10	150-300	Middle Age	Good	Scattered plantation; no significant defects	C,2		Long
G11	Mixed deciduous planting	Up to 8	100-200	Middle Age	Fair	Small linear group adjacent road; low vigour	C,2		Long
G12	Scattered mixed broad-leaf	Up to 5	75-180	Young to Middle Age	Good	Scattered, self-set trees; no significant defects	C,2		Long
G13	Plantation mixed woodland	Up to 4	75-150	Young	Good	Dense mixed species plantation; tree guards still in position	C,2		Long
G14	Plantation mixed woodland	Up to 5	100-200	Young	Good	Dense mixed species plantation; tree guards still in position	C,2		Long
G15	Mixed deciduous screen planting	Up to 5	75-150	Young	Good	Dense mixed species planting; no significant defects	C,2		Long

Rev	Description	Drawn	Approved	Date

TEP Genesis Centre
 Birchwood Science Park Warrington
 WA3 7BH
 Tel 01925 844004
 Fax 01925 844002
 e-mail tep@tep.uk.com

Project

NSN Link

Title

Tree Location Plan
 [EXISTING]

Drwg No
 D2336.003

Scale
 1:2000 @ A1

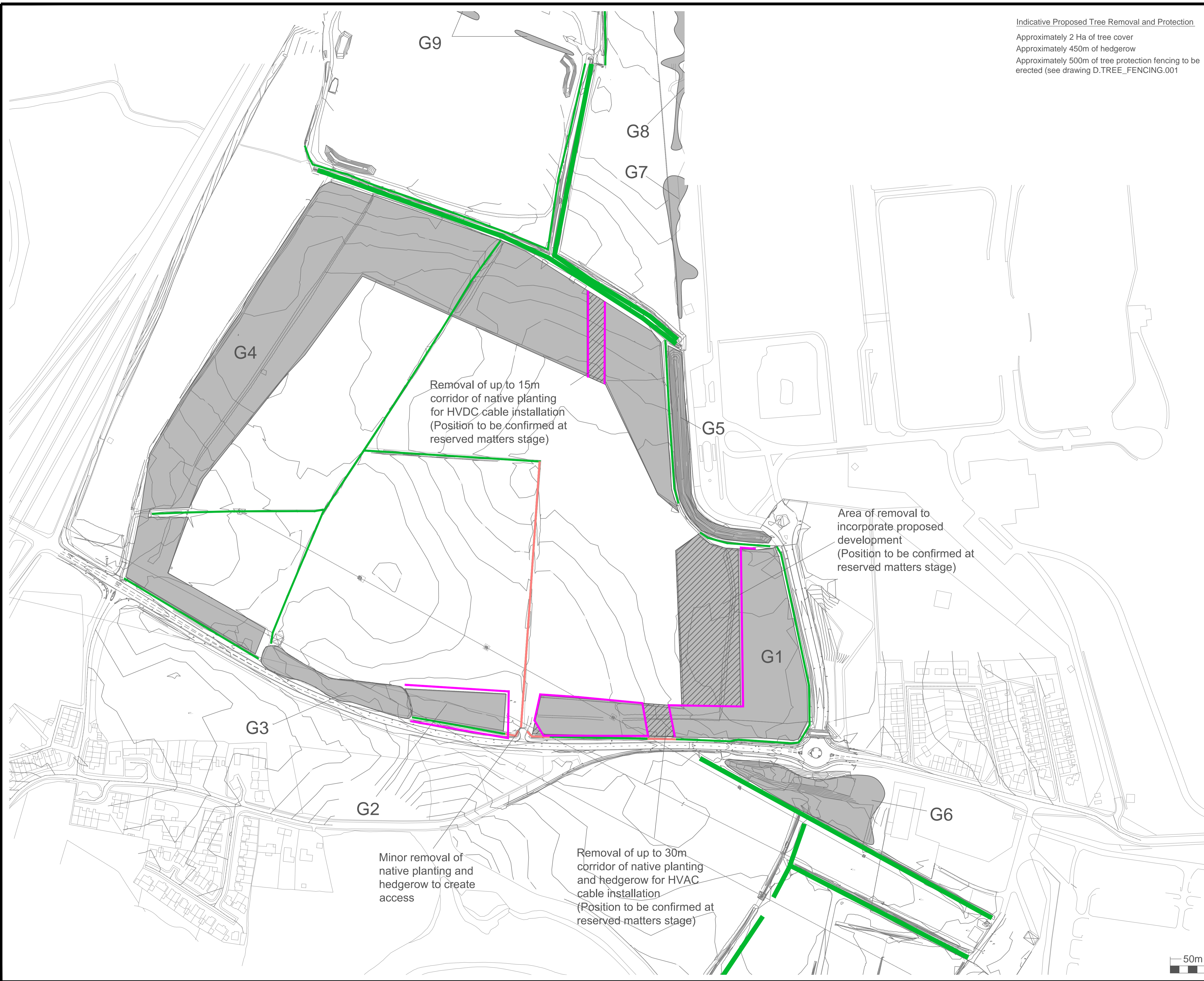
Date
 14/11/13

Drawn
 RMG

Checked
 TSJ

Approved
 JGS





Indicative Proposed Tree Removal and Protection
 Approximately 2 Ha of tree cover
 Approximately 450m of hedgerow
 Approximately 500m of tree protection fencing to be erected (see drawing D.TREE_FENCING.001)

KEY
(This drawing must be reproduced in colour)

- T1 Individual trees
- G1 Groups of trees
- Hedgerow
- Indicative Tree Protection Fencing (Final alignment to be agreed as a Reserved Matter)

Trees to be retained
(Tree value categorisation based on BS 5837:2012 Trees in relation to design, demolition and construction - Recommendations)

- Category A (High quality)
- Category B (Moderate quality)
- Category C (Low quality)
- Category U (Trees with existing or potential conservation value)

Trees to be removed
(Tree value categorisation based on BS 5837:2012 Trees in relation to design, demolition and construction - Recommendations)

- Category A (High quality)
- Category B (Moderate quality)
- Category C (Low quality)
- Category U (Unsuitable for retention)
- Hedgerow (Not categorised)

NOTE: This drawing should be read in conjunction with the respective Arboricultural Data Sheets (Appendix 1).

Removal of up to 15m corridor of native planting for HVDC cable installation (Position to be confirmed at reserved matters stage)

Area of removal to incorporate proposed development (Position to be confirmed at reserved matters stage)

Minor removal of native planting and hedgerow to create access

Removal of up to 30m corridor of native planting and hedgerow for HVAC cable installation (Position to be confirmed at reserved matters stage)

Rev	Description	Drawn	Approved	Date
Genesis Centre Birchwood Science Park Warrington WA3 7BH Tel 01925 844004 Fax 01925 844002 e-mail tep@tep.uk.com				
Project				
NSN Link				
Title				
Tree Removal and Protection Plan [PROPOSED]				
Drwg No		D2336.007		
Scale	1:2000 @ A1	Date	14/11/13	
Drawn	RMG	Checked	TSJ	Approved
				JGS

